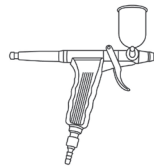
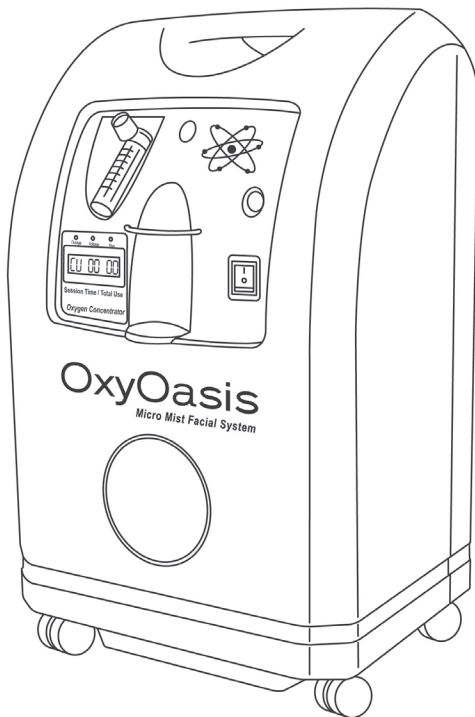


# oxyoasis oxygen facial system

#5415 OXYOASIS



## IMPORTANT PLEASE READ THESE SAFETY INSTRUCTIONS

### GENERAL SAFETY

1. Read carefully and keep these instructions in a safe place.
2. Use this product only for its intended function and do not use attachments not recommended by the manufacturer.
3. Do not use outdoors.

**This manual uses the following convention to highlight information relating to hazards and precautions associated with your oxygen concentrator:**

### PRECAUTIONS: USE OF OXYGEN

1. Oxygen is not a flammable gas, but it accelerates the combustion of materials. To avoid all risks of fire, the OxyOasis should be kept away from all flames, incandescent sources and sources of heat (cigarettes), as well as any combustible products such as oil, grease, solvents, aerosols, etc.
2. Do not use in an explosive atmosphere.
3. Avoid letting oxygen accumulate on an upholstered seat or other fabrics. In the event that the concentrator is operating while not supplying oxygen to a patient, position it so that the gas flow dilutes in the ambient air.
4. Place the device in a ventilated area free from smoke and atmospheric pollution, at least 2 feet from any other object.



### WARNING

#### DANGER – FIRE HAZARD, NO SMOKING

This device supplies high concentrations of oxygen which promotes rapid burning. Do not allow smoking, open flames, or other ignition sources within 5 feet of this device or its accessories. Oil, grease, or other petroleum products should NEVER be used on or around the unit.

Do not use extension cords with this unit.



### WARNING

#### RISK OF ELECTRIC SHOCK

Do not remove the cover or attempt to disassemble this product. Contact your equipment provider if service is required.

Unplug the power cord from the AC wall outlet before cleaning.

Do not use if the power cord is damaged.

### USE AND MAINTENANCE OF THIS DEVICE

1. Do not modify the OxyOasis System.
2. Use the cable provided and check that the electrical characteristics of the main socket used match those indicated on the manufacturer's plate on the rear panel of the machine.
3. The OxyOasis must only be used for oxygen air spray facial sessions.
4. Do not use in a specifically magnetic environment.
5. Do not carry out any facial session in areas exhibiting broken skin.
6. Do not allow oxygen spray to be directed into the eyes or ears
7. Do not use any flammable substance such as alcohol or acetone to prepare the skin for facial services.
8. Shut device off when not in use.
9. All GPO's must be installed by a qualified Electrician in accordance with local electrical standards.
10. DO NOT allow children to operate this product.
11. Turn the power off and remove the plug when not in use or when cleaning.
12. Do not let the power cord get damaged in any way.
13. Keep the power cord away from heat sources.
14. Do not use an extension cord unless the cord complies with local electrical safety standards.
15. Periodically inspect the power cord for signs of damage.
16. Do not operate any electrical item with a damaged power cord.

The manufacturer, assembler, installer or importer are not considered to be responsible themselves for the consequences on the safety, reliability and characteristics of the device unless:

1. The assembly, fitting, extensions, adjustments, modifications, or repairs have been performed by persons authorized by the party in question.
2. The electrical installation of the corresponding premises complies with local regulations.
3. The device is used in accordance with the instructions for use.
4. If the replacement parts used for the periodic servicing by an approved technician do not comply with the manufacturer's specification, the latter is absolved from all responsibility in the event of electrical shock.

Comfortel accepts no responsibility for damages to person or property resulting from improper use of the OxyOasis System.

**ONLY PERSONS WHO HAVE READ AND UNDERSTOOD THIS ENTIRE MANUAL ARE AUTHORIZED TO USE THE OXYOASIS.**

## GET STARTED

### OXYOASIS

Oxygen facial system

The OxyOasis is an aesthetic oxygen concentrator. It provides a continuous flow of oxygen-enriched air by separating the oxygen and nitrogen contained in ambient air.

This is not a medical device.

OxyOasis is a device that filters ambient air to provide the user with an uninterrupted flow of enriched oxygen.

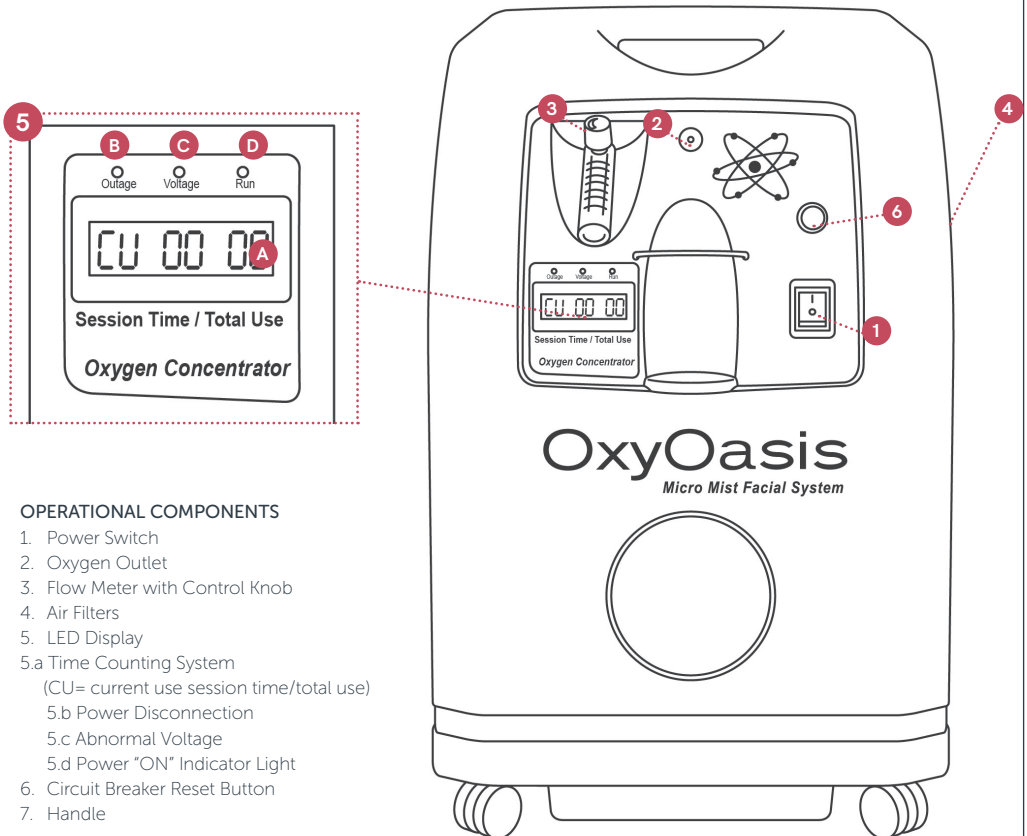
A compressor pulls in air and raises the air pressure in order to prepare the oxygen and nitrogen for filtration. The compressed air is then delivered to one of two airtight cylinders, where it is passed through a special, porous filter called zeolite. When compressed air is passed through the zeolite, the nitrogen molecules chemically bond to the zeolite while the oxygen flows through unimpeded to the user.

The machine enables a continuous flow of oxygen to the user by alternating the use of each cylinder. When compressed air is directed to one cylinder, the air pressure in the other cylinder is reduced to 0 PSI. The reduction in air pressure 'purges' the nitrogen from the zeolite and prepares the cylinder for the next cycle. This process allows the user to enjoy a steady flow of oxygen-enriched air.

The OxyOasis is easy to use and ergonomic. The single flow adjustment knob allows:

- The device to be easily adjusted to the desired flow rate.
- Technicians to limit flows to a specific range of flow rates with an internal locking device.

Note: The performances described only relate to the use of the OxyOasis with the accessories recommended by the manufacturer.



## INSTALLATION & ASSEMBLY

### STARTING UP/TESTING

1. Carefully unpack the concentrator and place upright on the floor.
2. Position the unit away from curtains or drapes, hot air registers and heaters. Be certain to place the unit so all sides are at least 2 feet away from a wall or other obstruction. Do not place the unit in a confined area.

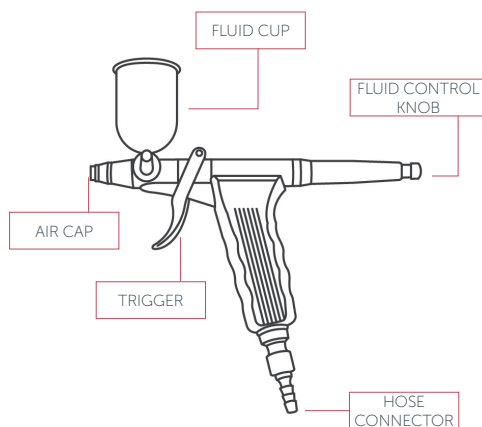
CAUTION: Always operate the unit in an upright position.

3. Turn the unit so that the operating controls are within easy reach and the air intake is not obstructed.
4. Remove the power cord completely from around the device (if wrapped around the device).
5. Install the power cord into an appropriate power receptacle in the wall. Double check to make sure the wall receptacle specifications match the power requirements stated on the unit (220V).
6. Unpack the tubing found inside the concentrator shipping carton.
7. Air enters the oxygen concentrator through two air intake gross particle filters located on the right side and underneath the oxygen concentrator. These filters remove dust particles and other impurities from the air. Before you operate the unit, make sure these filters are clean and positioned correctly (see section Maintenance for cleaning instructions).
8. Test the concentrator by pressing the power switch ON.
9. Next, turn the knob of the flow valve counter clockwise allowing oxygen to flow. This should cause the steel ball inside the flow meter to "float" on the flow of oxygen in accordance with the flow rate set. Check for oxygen flow at the output fitting on the front side of the unit by placing glass of water under the nozzle. The flow should disturb the surface of the water.
10. After the test, TURN THE UNIT POWER SWITCH "OFF". The oxygen-enriched airflow continues for approximately one (1) minute after the device is stopped.
11. If the unit fails to operate properly, refer to the troubleshooting section of this manual for a list of probable causes and solutions.

### ASSEMBLING AND CONNECTING THE TUBING & MICRO MIST AIR SPRAY SYSTEM.

1. Connect oxygen administration tubing to air outlet on OxyOasis.
2. Connect the other end of the tubing to the hose connector on the Micro Mist air spray system. The tube between the customer and the OxyOasis should be less than 45 feet long, in order to ensure that the oxygen flow rate remains satisfactory.
3. Ensure that all of the parts are connected firmly and correctly so as to avoid leaks.

#### MICRO MIST AIR SPRAY SYSTEM PARTS:



### CAUTION: DO NOT USE IF FLEXIBLE CORD IS DAMAGED

ANY REPAIRS TO LIGHT MUST BE CONDUCTED BY A QUALIFIED TRADESPERSON.  
TO REPAIR FLEXIBLE CORD, USE TWO CORE SHEATHED CABLE ONLY.

# OPERATION: POWER

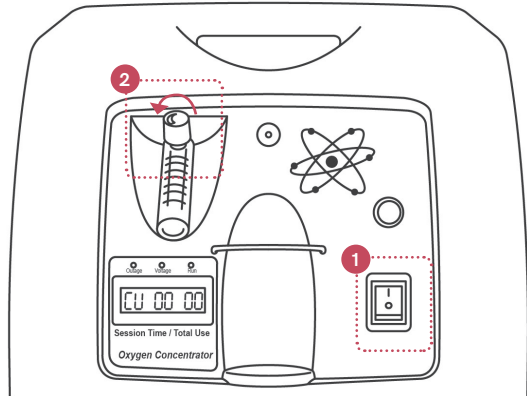
## POWER

Turning on:

Follow the steps to test and connect the oxygen administration tubing.

1. After initializing the oxygen concentrator, press the power switch to turn ON the concentrator. For best results, turn on the device 5 minutes before you intend to use it.
2. Open the flow valve of the concentrator by turning the knob counter-clockwise.

DIAGRAM A



# OPERATION: MICRO MIST AIR SPRAY SYSTEM

Follow the steps outlined in 'Installation & Assembly' to assemble the spray system and connect the oxygen administration tubing.

1. Fill the fluid cup reservoir with desired serum. Use only water based solutions. NEVER use essential oils or oily solutions in the system.
2. Pull the trigger halfway back for oxygen-enriched air only application. Pull the trigger all the way back for oxygen-enriched air plus product spray application.
3. Turn the fluid control knob clockwise to reduce intensity of spray or counterclockwise to increase it.
4. Loosen air cap to increase air volume; tighten air cap to decrease.
5. Adjust air volume and fluid control knob until you have the desired spray.
6. Follow protocols for specifics on application and duration.

# MINOR TROUBLESHOOTING

Problem	Probable Cause	Solution
Unit does not operate	The power cord is disconnected.  No power at outlet.  Concentrator circuit breaker has tripped.	Connect power cord to wall outlet. Check power source, fuses, breakers, switches, etc. Remove filter door on left side of the concentrator and momentarily press the circuit breaker reset button. Push the circuit breaker button and if no results, contact your supplier.
Any other problems		Turn off your unit, stop the device and wait for it to cool down. Check that the patient circuit is not obstructed. Start up again. If the device does not start, contact your supplier.
Spray gun doesn't operate correctly or the machine makes a weird beeping noise	The spray gun is not properly connected	Make sure the hose is firmly connected on both ends

## CLEANING & MAINTENANCE

### AIR FILTERS

The air filters located on the right side and underneath the cabinet should be cleaned at least once a week to keep your concentrator running properly.

1. Turn off your concentrator and remove the foam filter inserts from the right side and underneath the cabinet.
2. Wash the filters in warm water and dishwashing soap, rinse thoroughly, and dry with a towel. The filter should be completely dry before reinstalling.



### CAUTION

**DO NOT OPERATE THE CONCENTRATOR  
WITHOUT THE FILTERS INSTALLED OR WHILE  
EITHER FILTER IS DAMP**

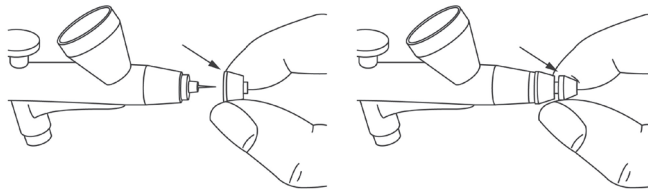
### OXYGEN TUBING, ACCESSORIES

1. Clean and/or replace your oxygen tubing and accessories as needed.
2. The micro mist air spray system must be cleaned after each use (as described below).

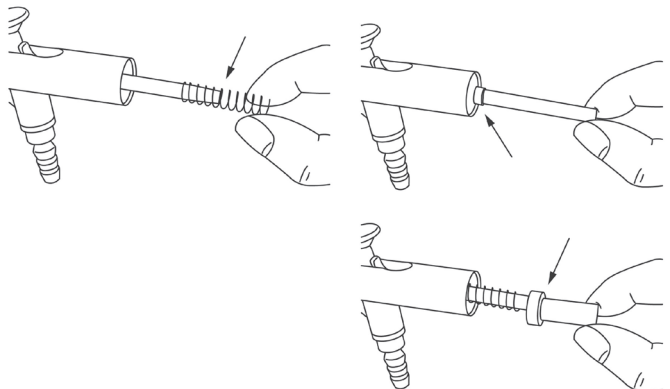
### SPRAY SYSTEM CLEANING INSTRUCTIONS

1. Using a small bristle brush and the isopropyl alcohol, clean any residue from the product cup. Once this is done you should back flush the spray system by filling the product cup with isopropyl alcohol, pull the trigger with your finger covering the air tip.

2. Unscrew the nozzle tip and the rear needle holder. Clean leftover residue on needle & nozzle tip with isopropyl alcohol. Be careful not to bend the needle.



3. Put everything back together by guiding the needle back into the outer case. Slide the spring over the needle and screw the fluid control knob securely in place.



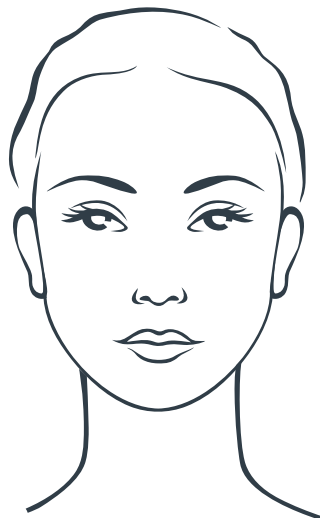
## TREATMENT METHODS

### THE ULTIMATE OXYGEN HYDRATION THERAPY FOR YOUNGER-LOOKING SKIN

Recommended for all skin types, this unique facial gives an instant moisture boost by combining 95% pure oxygen and an infusion of skincare serums for a smoother, more youthful complexion. An Oxyoasis Oxygen Facial soothes away any internal stress, then regenerates and boosts the health of every skin cell with oxygen. With the added benefits of treatment serums or ampoules of essential vitamins, minerals and antioxidants, it is the most effective skin treatment program of its kind, designed to cleanse, nourish and revitalise every cell of the skin.

#### CLIENT PREPARATION:

- Remove all jewellery and protect client's hair with a cap or headband.
- Wash your hands and put gloves on.



#### MINI BLAST 15 MINUTES

1. Cleanse skin with appropriate Cleanser.
2. Prepare the micro mist air spray system: fill up the fluid cup half-way with professional water-based serums of your choice
3. Turn on your OxyOasis and adjust flow meter to at least 3.5 LPM
4. Start by pulling the trigger halfway to release the gentle, adjustable flow of oxygen-enriched air over the facial area with quick, back and forth motions: stay close to the skin (only 1-2 mm away) at all times for best results, work in small areas and spend more time on areas of concern
5. Pull trigger all the way back now to spray the solution over the area to soothe and refresh: do this further away from skin and alternate with step 4 until the entire solution is released, sprayed in and absorbed.
6. Apply small amount of Eye Cream
7. Apply Treatment Cream and Sunscreen

#### SUPER BLAST 60 MINUTES

1. Remove makeup with Cleanser of your choice and rinse with a warm towel
2. Perform second application of Cleanser or Deep Cleanser and rinse with a warm towel
3. Apply Toner if required
4. Perform appropriate Exfoliation
5. Apply steam if desired
6. Turn on your OxyOasis and adjust flow meter to at least 3.5 LPM
7. Prepare the micro mist air spray system: fill the fluid cup halfway with professional water-based serum of your choice
8. Start by pulling the trigger half way back to release the gentle, adjustable flow of oxygen-enriched air over the facial area with quick, back and forth motions: stay close to the skin (1-2mm) at all times for best results, work in small areas and spend more time on areas of concern
9. Pull trigger all the way back to spray the serum solution over the skin to soothe and refresh: pull further away from skin to do this and alternate with step 8 until the entire solution is released, sprayed in and absorbed
10. Massage with appropriate massage medium of your choice
11. Apply Mask for 10-15 minutes and rinse with a warm towel
12. Prepare the micro mist air spray system: fill the fluid cup halfway with professional water-based serum of your choice and repeat Steps 8 & 9
13. Apply small amount of Eye Cream
14. Apply Treatment Cream and Sunscreen

# WARRANTY PERIOD

PERIOD AND DESCRIPTION	PRODUCTS
12 MONTHS PARTS & LABOR	All products
2 YEARS PARTS ONLY	All products excluding small electrical appliances
3 YEARS PARTS ONLY	All Linak electric actuators
5 YEARS PARTS ONLY	Taps cartridge, Ceramic basins
TERMS AND CONDITIONS	

For more information about our terms and conditions including warranty, please refer to our website.

comfortel

comfortel.com.au

PRODUCT CODE

#5415 OXYOASIS OXYGEN FACIAL SYSTEM  
OXYGEN OUTLET FLOW: 0.5 –5 LPM  
OXYGEN CONCENTRATION: 95%  
VOLTAGE: 220V, 50 Hz-60 Hz  
POWER: 300 W  
WEIGHT: 23.7 Kg  
SOUND LEVEL: ≤ 52 dbA

©Comfortel Furniture 1997-2018. All rights are reserved.  
No part of this document may be photocopied,  
reproduced or translated to another language without  
written consent of Comfortel Furniture Pty Ltd.

The information contained in this document is subject to change without notice and should not be construed as a commitment by Comfortel Furniture Pty Ltd.

Comfortel Furniture Pty Ltd. assumes no responsibility for any errors that may appear in this document nor does it make expressed or implied warranty of any kind with regard to this material, including, but not limited to, the implied warranties of merchantability and fitness for a particular purpose.

Comfortel Furniture Pty Ltd. shall not be liable for incidental or consequential damages in connection with or arising out of the use of this document and the program material.

**PLEASE RETAIN THIS INFORMATION FOR FUTURE REFERENCE.**

For more information about our products and services, contact us at [comfortel.com.au](http://comfortel.com.au)

PURCHASE DATE

INVOICE NUMBER

NOTE YOUR PURCHASE DATE & INVOICE NUMBER FOR FUTURE REFERENCE